

TENTATIVE

TOSHIBA PHOTOCOUPLER GaAlAs IRED & PHOTO-IC

TLP351

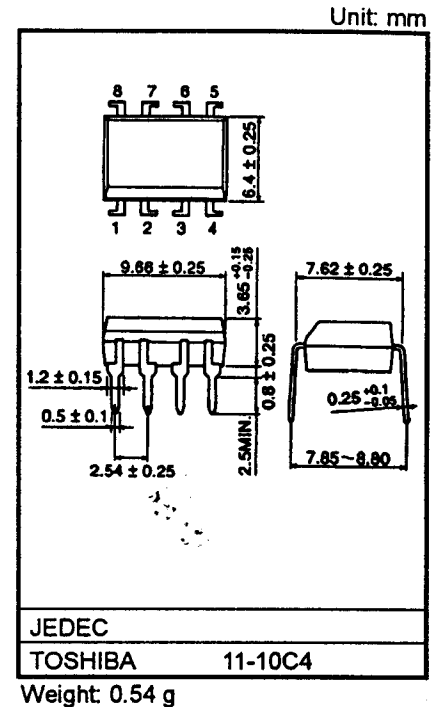
INVERTER FOR AIR CONDITIONOR
IGBT/Power MOS FET GATE DRIVE
INDUSTRIAL INVERTER

The TOSHIBA TLP351 consists of a GaAlAs light emitting diode and a integrated photodetector.

This unit is 8-lead DIP package.

TLP351 is suitable for gate driving circuit of IGBT or power MOS FET. Especially TLP351 is capable of "direct" gate drive of lower Power IGBTs.

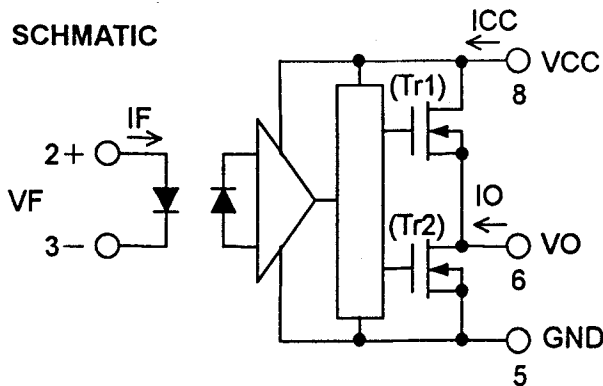
- Guaranteed Performance Over Temperature : -40~100°C
- Power Supply Voltage : 10~30V
- Input Current : IF=5mA(Max.)
- Switching Time (tpLH/tpHL) : 700ns(Max.)
- Common mode transient immunity : 10kV/us
- Isolation Voltage : 3750Vrms



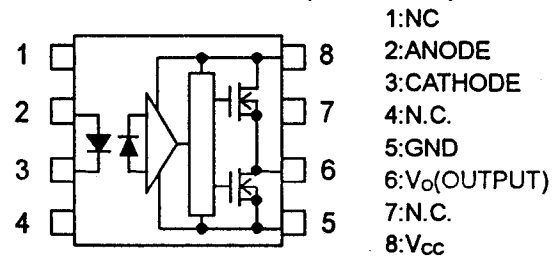
TRUTH TABLE

Input	LED	Tr1	Tr2	Output
H	ON	ON	OFF	H
L	OFF	OFF	ON	L

SCHMATIC



PIN CONFIGURATION (TOP VIEW)



RECOMMENDED OPERATING CONDITIONS

CHARACTERISTIC	SYMBOL	MIN.	TYP.	MAX.	UNIT
Input Current, ON	I _{F(ON)}	7.5	—	10	mA
Input Voltage, OFF	V _{F(OFF)}	0	—	0.8	V
Supply Voltage	V _{CC}	10	—	30	V
Peak Output Current	I _{OPH} /I _{OPL}	—	—	±0.15	A
Operating Temperature	T _{opr}	-40	—	100	°C

MAXIMUM RATINGS (Ta = 25°C)

CHARACTERISTIC		SYMBOL	RATING	UNIT
LED	Forward Current	I _F	20	mA
	Peak Transient Forward Current (Note 1)	I _{FPT}	1	A
	Reverse Voltage	V _R	5	V
DETECTOR	*H*Peak Output Current	I _{OPH}	-0.6	A
	*L*Peak Output Current	I _{OPL}	0.6	A
	Output Voltage	V _O	35	V
	Supply Voltage	V _{CC}	35	V
Storage Temperature Range		T _{stg}	-55~125	°C
Operating Temperature Range		T _{opr}	-40~100	°C
Lead Soldering Temperature (10 s)		T _{sol}	260	°C
Isolation Voltage (AC, 1 minute, R.H. ≤ 60%) (Note2)		BV _S	3750	V _{rms}

(Note 1): Device considered a two-terminal device : LED side pins shorted together, and DETECTOR side pins shorted together.

(Note 2): Device considered a two terminal device : pins 1,2,3 and 4 shorted together, and pins 5,6,7 and 8 shorted together.

ELECTRICAL CHARACTERISTICS (Ta = -40~100°C, Unless otherwise specified)

CHARACTERISTIC		SYMBOL	TEST CONDITION		MIN.	TYP.	MAX.	UNIT
Forward Voltage		V _F	I _F = 5 mA, Ta=25°C			1.55	1.70	V
Temperature Coefficient of Forward Voltage		ΔV _F /ΔTa	I _F = 5 mA,		—	-2.0	—	mV/°C
Input Reverse Current		I _R	V _R =5V, Ta=25°C		—	—	10	μA
Input Capacitance		C _T	V = 0, f = 1MHz, Ta=25°C		—	45	—	pF
Output Voltage	"L" Level	V _{OL}	VCC=15V	IO=100mA, VF=0.8V	—	0.4	1.0	V
	"H" Level	V _{OH}		IO=-100mA, IF=5mA	11.0	13.3	—	
Output Current	"L" Level	IOPL1	VCC=15V	IF=0mA	V6-5=2V	0.2	0.35	A
		IOPL2			V6-5=10V	0.4	0.63	
	"H" Level	IOPH1		IF=5mA	V8-6=4V	-0.2	-0.4	
		IOPH2			V8-6=10V	-0.4	-0.67	
Supply Current	"L" Level	ICCL	VCC=10~30V VO Open	IF=0mA	—	1.3	2.0	mA
	"H" Level	ICCH		IF=10mA	—	1.4	2.0	
Threshold Input Current	"Output L→H"	IFLH	VCC=15V, VO>1V		—	2.5	5	mA
Threshold Input Voltage	"Output H→L"	VFHL	VCC=15V, VO<1V		0.8	—	—	V
Capacitance (Input-Output)		CS	VS=0, f=1MHz, Ta=25°C		—	1.0	—	pF
Resistance (Input-Output)		RS	VS=500V, Ta=25°C, R.H. ≤ 60%		10 ¹²	10 ¹⁴	—	Ω

*All typical values are at Ta=25°C

SWITCHING CHARACTERISTICS (Ta = -40~100°C, Unless otherwise specified)

CHARACTERISTIC		SYMBOL	TEST CONDITION		MIN.	TYP.	MAX.	UNIT
Propagation Delay Time	L→H	tpLH	VCC=30V	IF=0→5mA	100	—	700	ns
	H→L	tpHL	Rg=47Ω, Cg=3nF	IF=5→0mA	100	—	700	
Propagation Delay Difference Between Any Two Parts or Channels		PDD (tpHL-tpLH)	Rg=47Ω, Cg=3nF		-500	—	500	ns
Output Rise Time(10-90%)		tr	IF=5→0/0→5mA, VCC=30V		—	50	—	ns
Output Fall Time(90-10%)		tf	Rg=47Ω, Cg=3nF		—	50	—	
Common Mode Transient Immunity at High Level Outout		CM _H	VCM=1000Vp-p VCC=30V Ta=25°C	IF=5mA VO(Max)=1.0V	-10000	—	—	V/μs
Common Mode Transient Immunity at Low Level Outout		CM _L		IF=0mA VO(Min)=26V	10000	—	—	

*All typical values are at Ta=25°C

RESTRICTIONS ON PRODUCT USE

000707EBC

- TOSHIBA is continually working to improve the quality and reliability of its products. Nevertheless, semiconductor devices in general can malfunction or fail due to their inherent electrical sensitivity and vulnerability to physical stress. It is the responsibility of the buyer, when utilizing TOSHIBA products, to comply with the standards of safety in making a safe design for the entire system, and to avoid situations in which a malfunction or failure of such TOSHIBA products could cause loss of human life, bodily injury or damage to property.
In developing your designs, please ensure that TOSHIBA products are used within specified operating ranges as set forth in the most recent TOSHIBA products specifications. Also, please keep in mind the precautions and conditions set forth in the "Handling Guide for Semiconductor Devices," or "TOSHIBA Semiconductor Reliability Handbook" etc..
- The TOSHIBA products listed in this document are intended for usage in general electronics applications (computer, personal equipment, office equipment, measuring equipment, industrial robotics, domestic appliances, etc.). These TOSHIBA products are neither intended nor warranted for usage in equipment that requires extraordinarily high quality and/or reliability or a malfunction or failure of which may cause loss of human life or bodily injury ("Unintended Usage"). Unintended Usage include atomic energy control instruments, airplane or spaceship instruments, transportation instruments, traffic signal instruments, combustion control instruments, medical instruments, all types of safety devices, etc.. Unintended Usage of TOSHIBA products listed in this document shall be made at the customer's own risk.
- Gallium arsenide (GaAs) is a substance used in the products described in this document. GaAs dust and fumes are toxic. Do not break, cut or pulverize the product, or use chemicals to dissolve them. When disposing of the products, follow the appropriate regulations. Do not dispose of the products with other industrial waste or with domestic garbage.
- The products described in this document are subject to the foreign exchange and foreign trade laws.
- The information contained herein is presented only as a guide for the applications of our products. No responsibility is assumed by TOSHIBA CORPORATION for any infringements of intellectual property or other rights of the third parties which may result from its use. No license is granted by implication or otherwise under any intellectual property or other rights of TOSHIBA CORPORATION or others.
- The information contained herein is subject to change without notice.